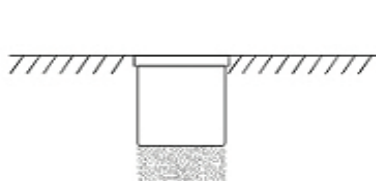


WARNING: RISK OF FIRE AND ELECTRICAL SHOCK. FIXTURE MUST BE INSTALLED BY A QUALIFIED ELECTRICIAN ONLY IN ACCORDANCE WITH NATIONAL, LOCAL BUILDING AND ELECTRICAL CODES. DISCONNECT POWER AT ELECTRICAL PANEL BEFORE SERVICING.

9034 INSTALLATION INSTRUCTIONS FOR: 8-Inch In-Ground RGB LED Well Light

Safety Precautions:

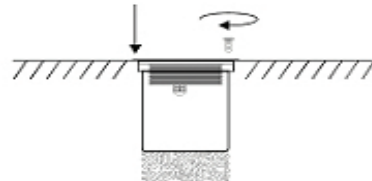
- **Read All Instructions:** Carefully review all safety precautions and installation instructions before installing or servicing the fixture. Failure to follow these instructions could result in serious electric shock or property damage.
- **Professional Wiring:** It is recommended that a qualified electrician handle all wiring. Ensure all work is performed in accordance with national and local electrical codes.
- **Verify Power Source:** Ensure the power source meets the fixture's requirements as specified on the fixture housing labels.



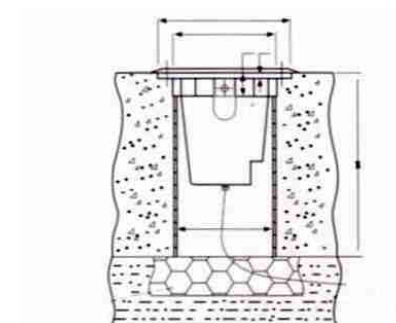
1 Put the sleeve into the ground, with the top at the same level as the ground. The cable needs to go through the sleeve.



2 Connect the and light up. Leave enough cable length for maintenance.



3 Place the light fixture into the sleeve and secure it to the sleeve by using 2 screws on either side of the cover.



WARNING: RISK OF FIRE AND ELECTRICAL SHOCK. FIXTURE MUST BE INSTALLED BY A QUALIFIED ELECTRICIAN ONLY IN ACCORDANCE WITH NATIONAL, LOCAL BUILDING AND ELECTRICAL CODES. DISCONNECT POWER AT ELECTRICAL PANEL BEFORE SERVICING.

Type	9034
Input Voltage	AC100-240V
Power	9/12/18W
No. Of LEDS	9/12/18
Color	R G B
CCT(nm)	R615-620nm; G515-520nm; B460-465nm
Weight(g)	1474g
Material	Aluminum+GLASS
Light Angle	10/15/30/45/60°
Mode	Auto-change
Life Span	30000hours

Button	Function
	Brightness up
	Brightness down
	Power off
	Power on
	16key fixed color selection panel
	Auto-change colors, fast skip
	Auto-change colors, slow skip
	Auto-change colors, fast shade
	Auto-change colors, slow shade

